

WAAS CH 60929 W29A	APP CRS 289°	Rwy ldg TDZE Apt Elev	5001 308 310
--	------------------------	-----------------------------	---

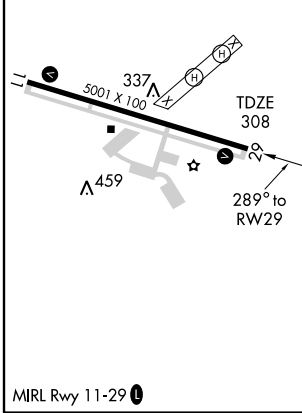
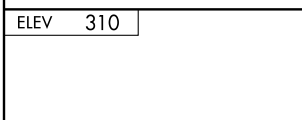
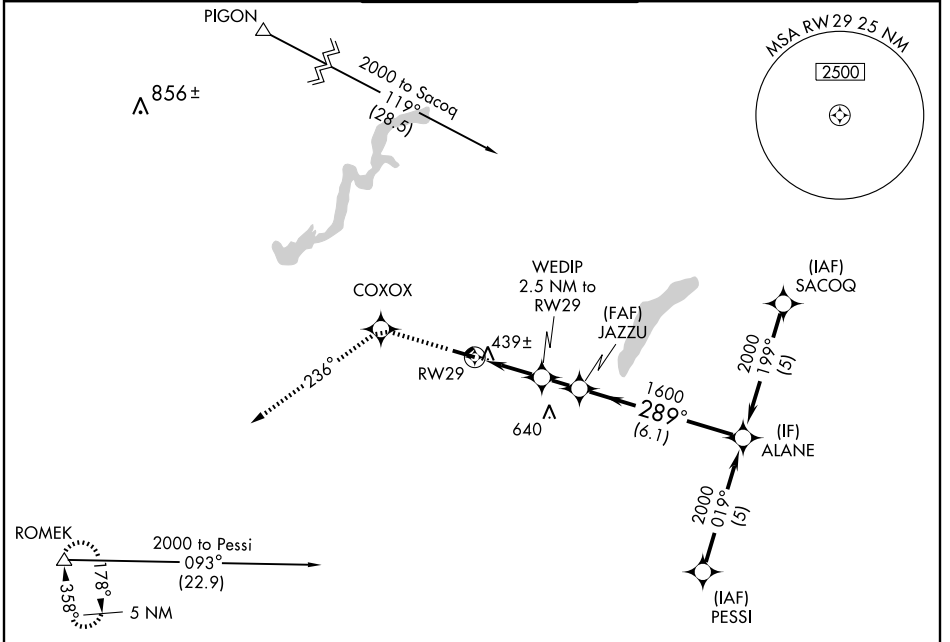
ANDALUSIA/OPP/
SOUTH ALABAMA RGNL AT BILL BENTON FIELD (79J)

RNAV (GPS) RWY 29

⚠ DME/DME RNP-0.3 NA. If local altimeter setting not received, use Cairns AAF altimeter setting and increase DA to 712 feet and increase all MDAs 100 feet.
⚠NA Visibility reduction by helicopters NA.

MISSED APPROACH: Climb to 2500 direct COXOX and via 236° track to ROMEK and hold.

ASOS 134.875	CAIRNS APP CON * 133.45 239.4	ANDALUSIA-OPP TOWER * 119.55 (CTAF) 317.75	GND CON 121.9 273.45	UNICOM 122.8
------------------------	---	--	--------------------------------	------------------------



2500	COXOX	236° TRK	ROMEK	Procedure Turn NA
			JAZZU	ALANE
			289°	2000
			1600	GS 3.00° TCH 40
			1140	
			2.5 NM	1.4 NM
			6.1 NM	
CATEGORY	A	B	C	D
LPV DA	630-1¼ 322 (400-1¼)			
LNAV MDA	720-1	412 (500-1)	720-1¼	412 (500-1¼)
CIRCLING	780-1	470 (500-1)	780-1½	860-2
			470 (500-1½)	550 (600-2)

RNAV (GPS) RWY 29

SE-4, 17 JAN 2008 to 14 FEB 2008

SE-4, 17 JAN 2008 to 14 FEB 2008